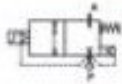


## 2/2 WAY PILOT OPERATED SOLENOID VALVE, G 1/4" ÷ G 1"



normally closed

TYPE: B 203/204/205/206/222

### TECHNICAL SPECIFICATIONS

Media: water, oil, air

Media temperature: -10°C ÷ + 90°C

Ambient temperature: -10°C ÷ + 50°C

Body material: brass (CW617N EN 12165)

Operator material: stainless steel

Operator seal material: NBR

Seal and Diaphragm material: NBR

Coil power: AC 10VA (holding)

AC 16VA (inrush)

DC 7W

Protection class: IP 65 (with connector)

### OPTIONS

Normally open (Ex. code B206D BY)

Manual override (Ex. code B204D BZ M)

Speed control screw (only for B206D BY V and B222D BY V)

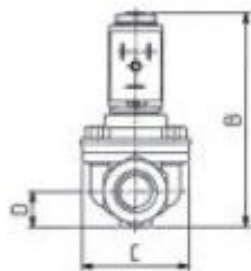
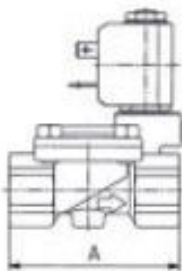
EPDM seal for air and hot water MAX 120°C (Ex. code B204D E Z)

FKM seal for air, water, oil MAX 130°C (Ex. code B204D V Z)

Version with operator ø 14,5 and coil type 7000 available on request (Ex. code D206D BZ)



SELECTION TABLE	VALVE	G connection	Nominal Diameter	Flow rate kvs	O PD			COILS		
	Code	[ISO 228]	[mm]	[l/min]	min	max	AC [bar]	DC [bar]	Code	[Volts/Hz]
					[bar]					
	B 203D BZ	1/4"	13	26	0.3		16	16	2250	24V DC
	B 204D BZ	3/8"	13	55	0.3		16	16	2200	24V 50/60Hz
	B 205D BZ	1/2"	13	63	0.3		16	16	2400	110V 50Hz - 120V 60Hz
	B 206D BX compact	3/4"	21	90	0.3		16	16	2600	200V 50Hz - 220V 60Hz
	B 206D BY	3/4"	25	140	0.3		16	16	2700	230V 50Hz - 240V 60Hz
	B 222D BY	1"	25	216	0.3		16	16		



DIMENSIONS & WEIGHTS	G connection	A	B	C	D	weight
	[ISO 228]	[mm]	[mm]	[mm]	[mm]	[Kg]
	1/4"	67	90	44	15	0.4
	3/8"	67	90	44	15	0.4
	1/2"	67	90	44	15	0.4
	3/4" compact	82	105	50	20,25	0.6
	3/4"	96	115	70	23	1.2
	1"	96	115	70	23	1.2

**Alpha**  
ENGENHARIA

ALPHA ENGENHARIA - Equipamentos e Soluções Industriais  
Rua D. António Meireles, n.º 93 | 4250-055 Porto  
Tel. 220 136 963 | Tlm: 933 694 486  
info@alphaengenharia.pt | www.alphaengenharia.pt