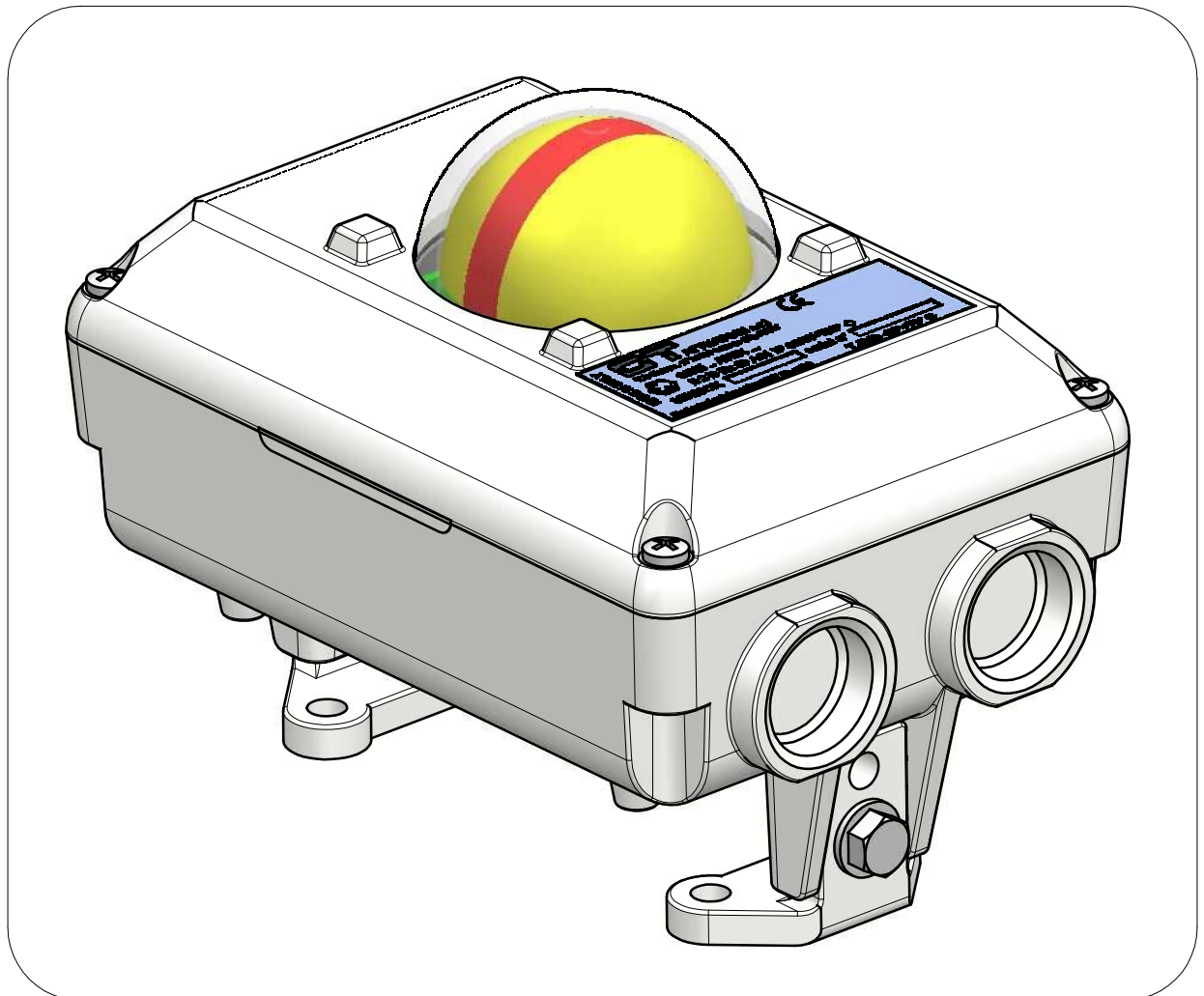


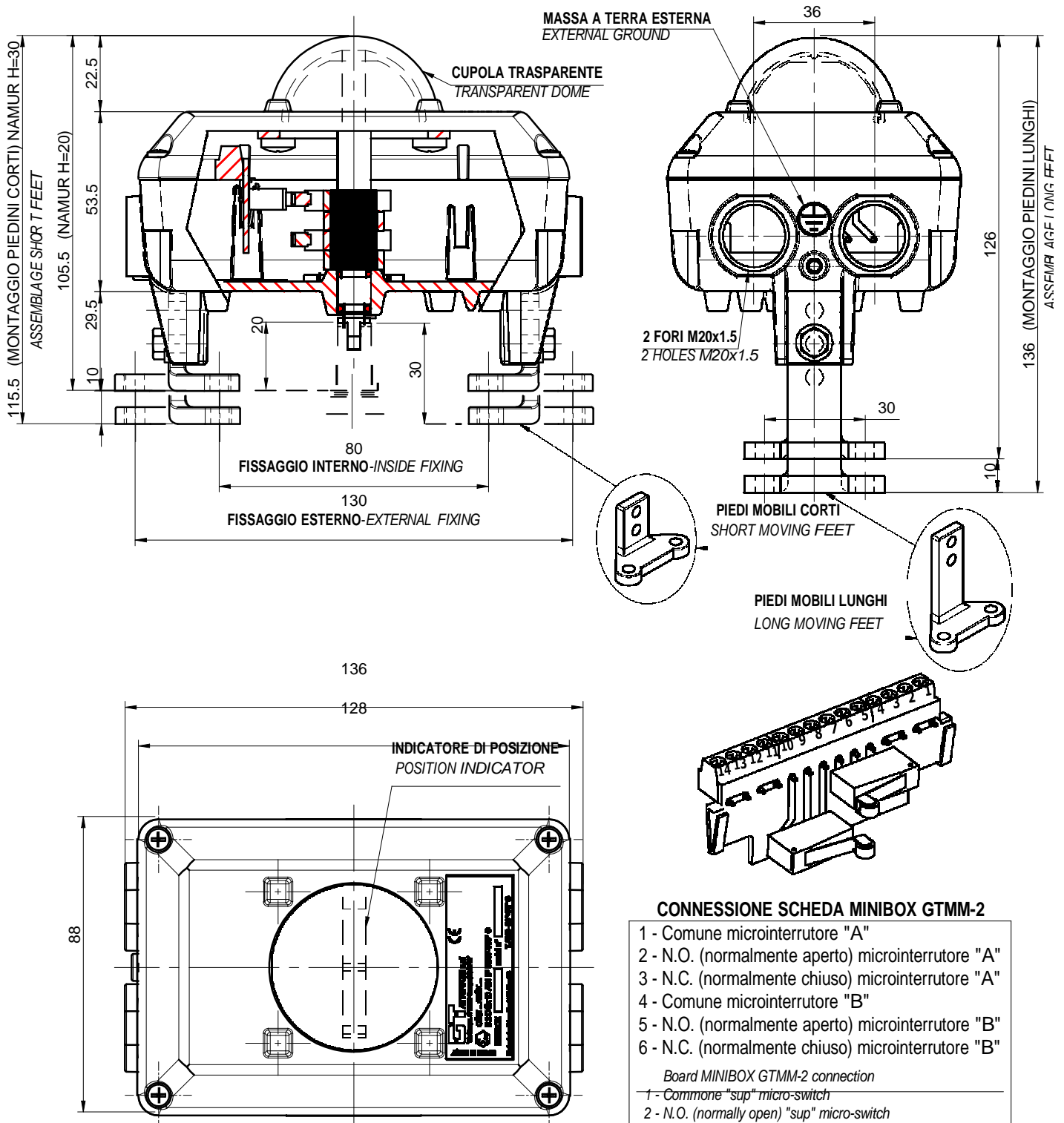
# BOX INDICATORE / SIGNAL BOX " MINIBOX GT "



## BOX INDICATORE - SIGNAL BOX

### " MINIBOX GT " MODELLO - MODEL: " GTMM-2 "

2 MICRO MECCANICI - 2 MICRO-SWITCH:   
 → OMROM SSG-5 L2P (contatti argentati - silver contact)   
 → OMROM SSG-01 L2P (contatti dorati - gold contact)

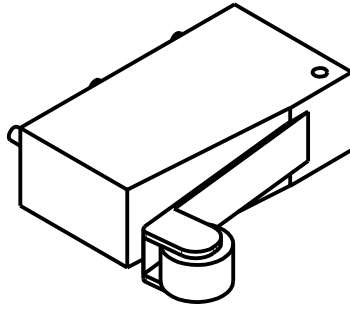


#### CONNESSIONE SCHEDA MINIBOX GTMM-2

- 1 - Comune microinterruttore "A"
- 2 - N.O. (normalmente aperto) microinterruttore "A"
- 3 - N.C. (normalmente chiuso) microinterruttore "A"
- 4 - Comune microinterruttore "B"
- 5 - N.O. (normalmente aperto) microinterruttore "B"
- 6 - N.C. (normalmente chiuso) microinterruttore "B"

Board MINIBOX GTMM-2 connection

- 1 - Comune "sup" micro-switch
- 2 - N.O. (normally open) "sup" micro-switch
- 3 - N.C. (normally closed) "sup" micro-switch
- 4 - N.C. (normally closed) "inf" micro-switch
- 5 - N.O. (normally open) "inf" micro-switch
- 6 - Comune "inf" micro-switch



### CARATTERISTICHE GENERALI / GENERAL RATINGS

Tensioni <i>Rated voltage</i>	Senza carico induttivo Non inductive load				Carico induttivo Inductive load			
	Carico resistivo <i>Resistive load</i>		Carico lampada <i>Lamp load</i>		Carico induttivo <i>Inductive load</i>		Carico motore <i>Motor load</i>	
	NC	NO	NC	NO	NC	NO	NC	NO
125 VAC	5(0,1) A (see note 1)		1,5A	0,7A	3A		2,5A	1,3A
250 VAC	3A		1A	0,5A	2A		1,5A	0,8A
8 VDC	5A		2A		5A		3A	
14 VDC	5A		2A		4A		3A	
30 VDC	4(0,1) A (see note 1)		2A		3A		3A	
125 VDC	0,4A		0,05A		0,4A		0,05A	
250 VDC	0,2A		0,03A		0,2A		0,05A	

**NOTE: 1** - The values in the parentheses are for the SSG-01

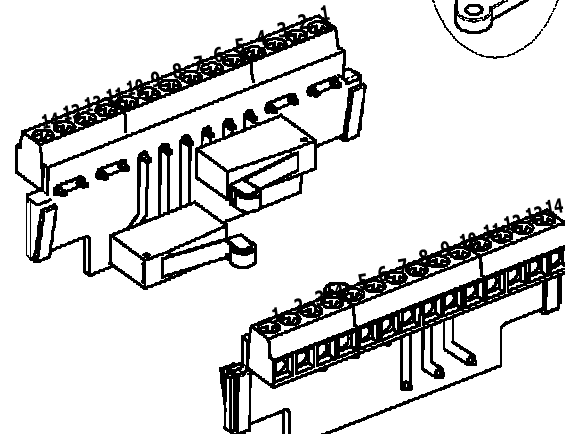
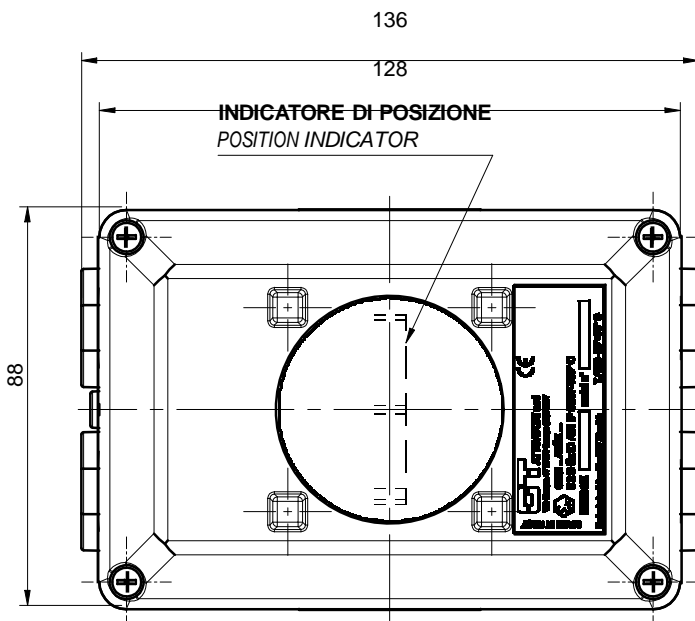
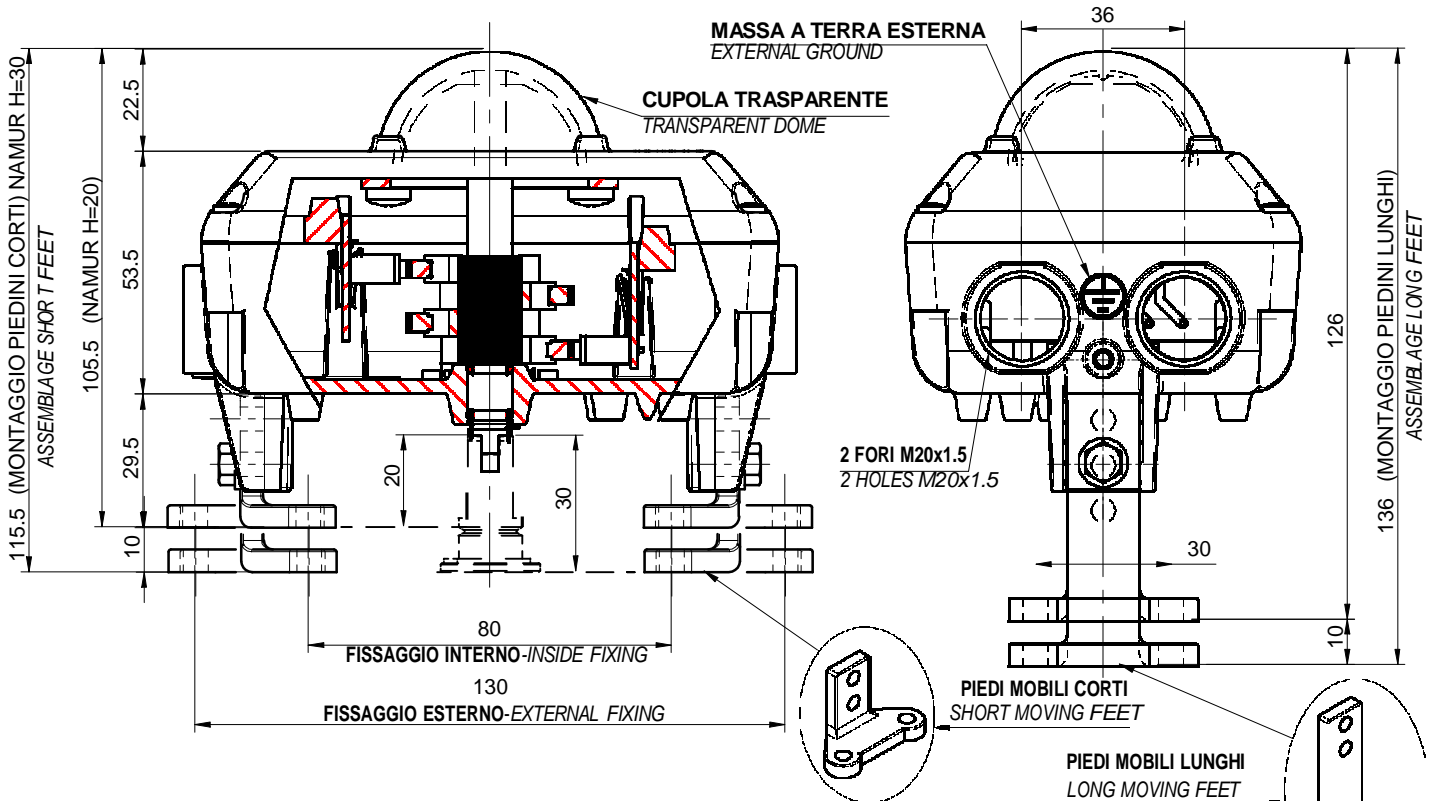
### SPECIFICHE CONTATTI / CONTACT SPECIFICATIONS

ARTICOLO / ITEM		SSG-5	SSG-01H.T	SSG-01P
CONTATTI CONTACT	SPECIFICHE / SPECIFICATION	RIVET	CROSSBAR	CROSSBAR
	MATERIALE / MATERIAL	SILVER	GOLD ALLOY	GOLD ALLOY
	APERTURA (VALORE STANDARD) GAP (STANDARD VALUE)	0.5 mm	0.25 mm	0.5 mm
INRUSH CURRENT	NC	20 A MAX	1 A MAX	1 A MAX
	NO	10 A MAX	1 A MAX	1 A MAX
MINIMO CARICO APPLICABILE MINIMUM APPLICABLE LOAD		160 mA at 5 VDC	1 mA at 5 VDC	1 mA at 5 VDC

## BOX INDICATORE - SIGNAL BOX

### " MINIBOX GT " MODELLO - MODEL: " GTMM-4 "

4 MICRO MECCANICI - 4 MICRO-SWITCH:   
 — OMRON SSG-5 L2P (contatti argentati - silver contact)   
 — OMRON SSG-01 L2P (contatti dorati - gold contact)

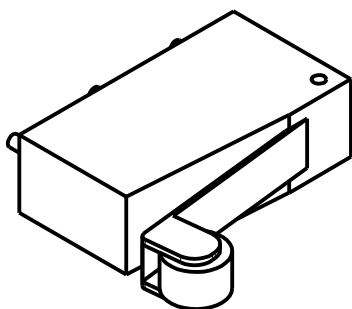


#### Connessione schede MINIBOX GTMM-4

- 5 - Comune microinterruttore "sup"
- 6 - N.O. (normalmente aperto) microinterruttore "sup"
- 7 - N.C. (normalmente chiuso) microinterruttore "sup"
- 8 - N.C. (normalmente chiuso) microinterruttore "inf"
- 9 - N.O. (normalmente aperto) microinterruttore "inf"
- 10 - Comune microinterruttore "inf"

#### Board MINIBOX GTMM-4 connection

- 5 - Common "sup" micro-switch
- 6 - N.O. (normally open) "sup" micro-switch
- 7 - N.C. (normally closed) "sup" micro-switch
- 8 - N.C. (normally closed) "inf" micro-switch
- 9 - N.O. (normally open) "inf" micro-switch
- 10 - Common "inf" micro-switch



### CARATTERISTICHE GENERALI / GENERAL RATINGS

Tensioni <i>Rated voltage</i>	Senza carico induttivo Non inductive load				Carico induttivo Inductive load			
	Carico resistivo <i>Resistive load</i>		Carico lampada <i>Lamp load</i>		Carico induttivo <i>Inductive load</i>		Carico motore <i>Motor load</i>	
	NC	NO	NC	NO	NC	NO	NC	NO
125 VAC	5(0,1) A (see note 1)		1,5A	0,7A	3A		2,5A	1,3A
250 VAC	3A		1A	0,5A	2A		1,5A	0,8A
8 VDC	5A		2A		5A		3A	
14 VDC	5A		2A		4A		3A	
30 VDC	4(0,1) A (see note 1)		2A		3A		3A	
125 VDC	0,4A		0,05A		0,4A		0,05A	
250 VDC	0,2A		0,03A		0,2A		0,05A	

**NOTE: 1** - The values in the parentheses are for the SSG-01

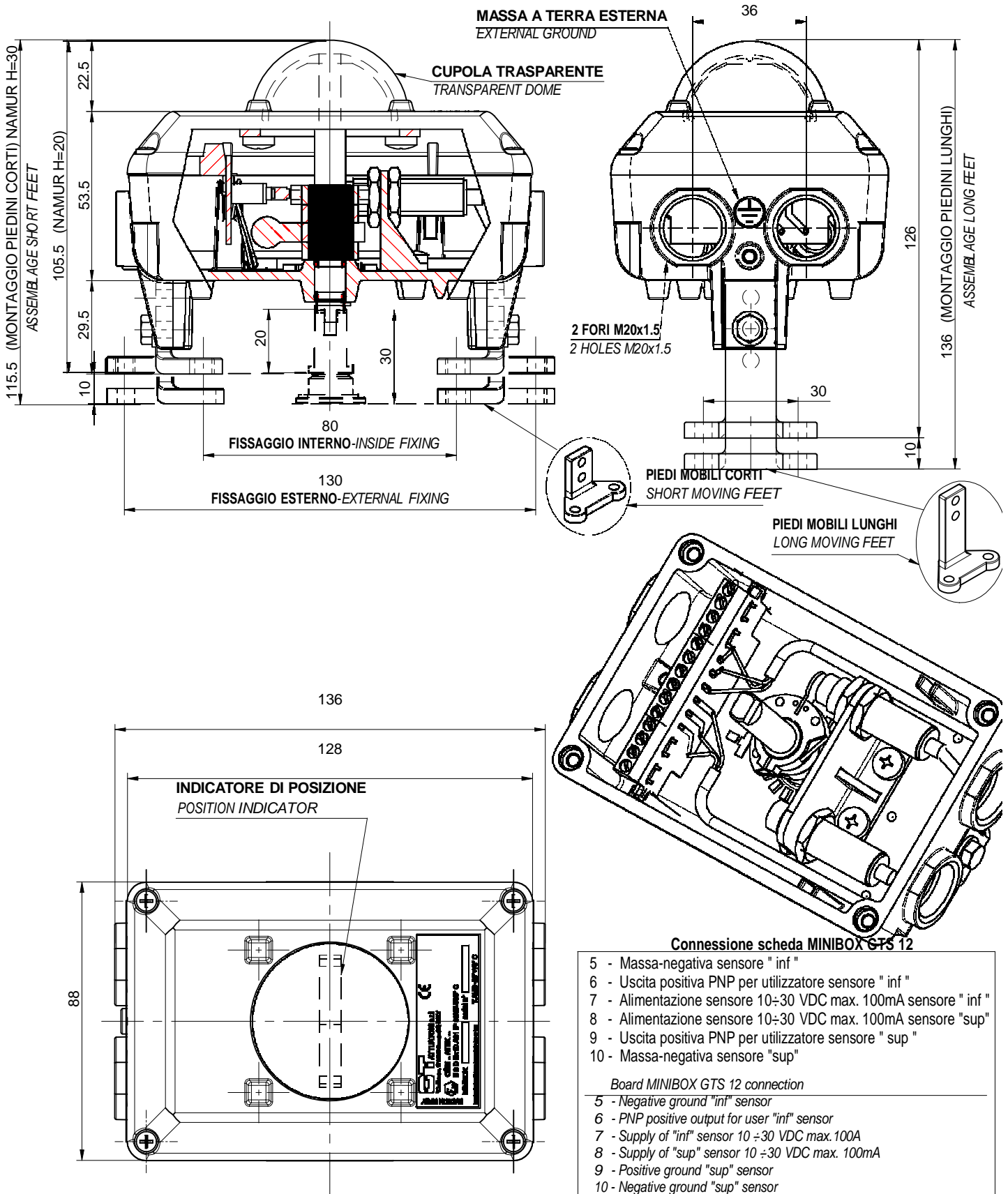
### SPECIFICHE CONTATTI / CONTACT SPECIFICATIONS

ARTICOLO / ITEM		SSG-5	SSG-01H.T	SSG-01P
CONTATTI <i>CONTACT</i>	SPECIFICHE / <i>SPECIFICATION</i>	RIVET	CROSSBAR	CROSSBAR
	MATERIALE / <i>MATERIAL</i>	SILVER	GOLD ALLOY	GOLD ALLOY
	APERTURA (VALORE STANDARD) <i>GAP (STANDARD VALUE)</i>	0.5 mm	0.25 mm	0.5 mm
INRUSH CURRENT	NC	20 A MAX	1 A MAX	1 A MAX
	NO	10 A MAX	1 A MAX	1 A MAX
MINIMO CARICO APPLICABILE <i>MINIMUM APPLICABLE LOAD</i>		160 mA at 5 VDC	1 mA at 5 VDC	1 mA at 5 VDC

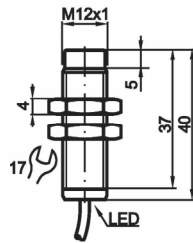
## BOX INDICATORE - SIGNAL BOX

### " MINIBOX GT " MODELLO - MODEL: " GTMS-2 "

### 2 SENSORI / SENSORS: " P+F NBN4-12-GM40-E2 "

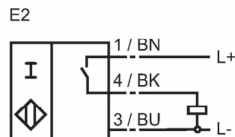


Basic series

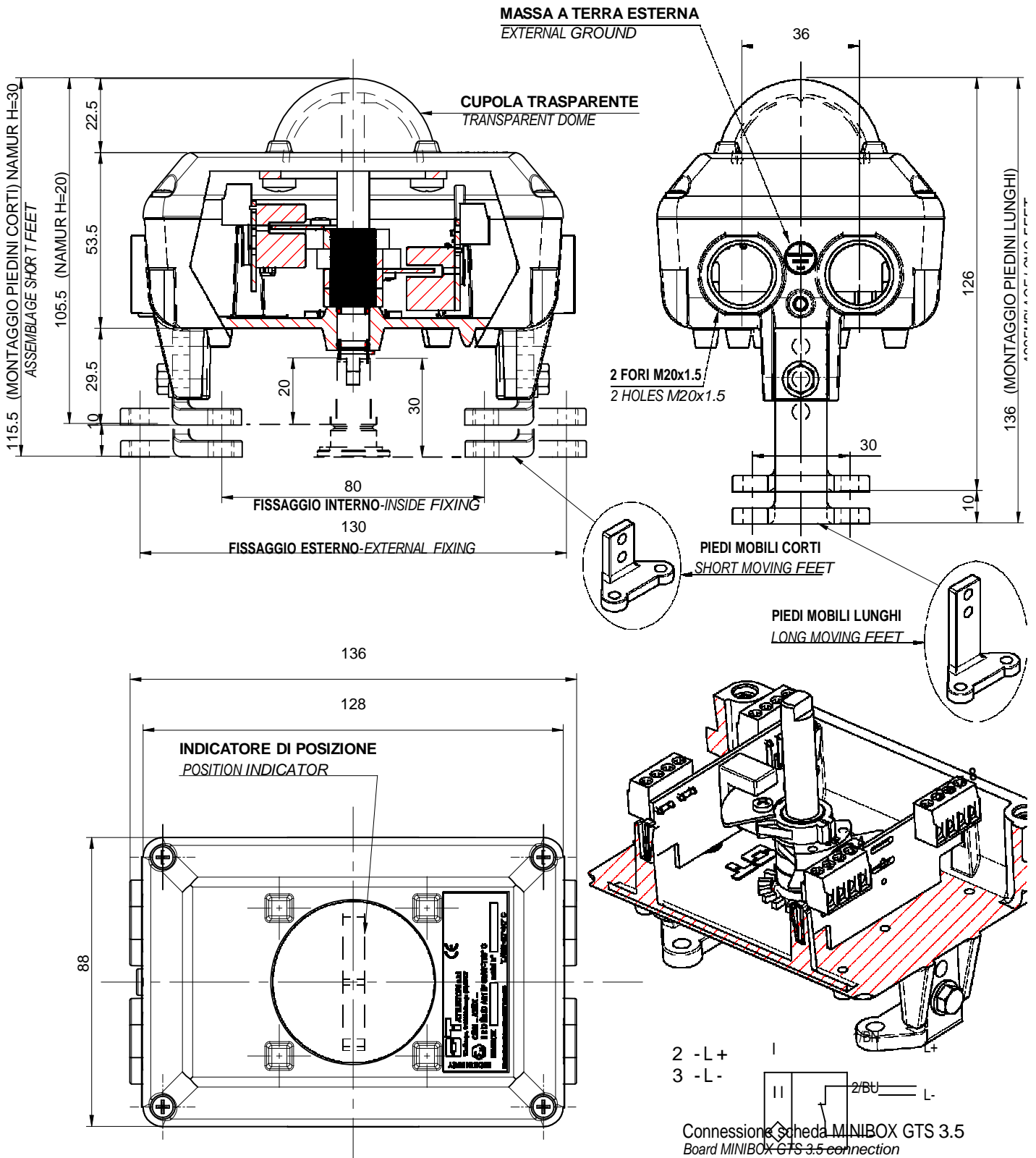


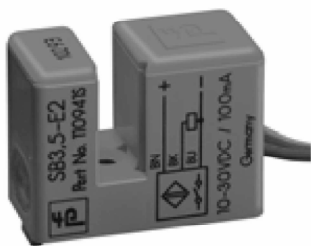
General specifications	
Switching element function	PNP Make function
Rated operating distance $s_n$	4 mm
Installation	not embeddable
Assured operating distance $s_a$	0 ... 3,24 mm
Reduction factor $r_{AI}$	0,45
Reduction factor $r_{Cu}$	0,4
Reduction factor $r_{V2A}$	0,75
Nominal ratings	
Operating voltage $U_B$	10 ... 30 V
Switching frequency $f$	0 ... 800 Hz
Hysteresis $H$	typ. %
Reverse polarity protection	Protected against reverse polarity
Short-circuit protection	pulsing
Voltage drop $U_d$	$\leq 3$ V
Operating current $I_L$	0 ... 100 mA
Off-state current $I_r$	0 ... 0,5 mA typ. 0,1 $\mu$ A at 25 °C
No-load supply current $I_0$	$\leq 15$ mA
Indication of the switching state	all direction LED, yellow
Standard conformity	
Standards	EN 60947-5-2
Ambient conditions	
Ambient temperature	-25 ... 70 °C (248 ... 343 K)
Mechanical specifications	
Connection type	2 m, PVC cable
Core cross-section	0.14 mm <sup>2</sup>
Housing material	brass, nickel-plated
Sensing face	PBT
Protection degree	IP67

### Connection type:



**BOX INDICATORE - SIGNAL BOX**  
**" MINIBOX GT " MODELLO - MODEL: " GTMS-2-SC 3.5 "**  
**2 SENSORI / SENSORS: " P+F SC 3.5-NO-BU "**





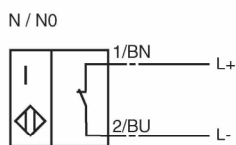
**Model Number**

SC3,5-N0-BU

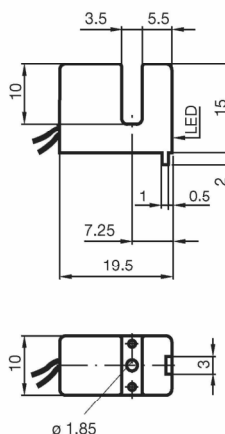
**Features**

- Comfort series
- 3.5 mm slot width
- Usable up to SIL2 acc. to IEC 61508

**Connection**



**Dimensions**



**Technical Data**

<b>General specifications</b>	
Switching element function	NAMUR NC
Slot width	3.5 mm
Depth of immersion (lateral)	5 ... 7 typ. 6 mm
Installation	
Output polarity	NAMUR
<b>Nominal ratings</b>	
Nominal voltage	$U_o$ 8 V
Operating voltage	$U_B$ 5 ... 25 V
Switching frequency	f 0 ... 3000 Hz
Hysteresis	H 0.21 ... 0.4 mm
<b>Current consumption</b>	
Measuring plate not detected	$\geq 3$ mA
Measuring plate detected	$\leq 1$ mA
Indication of the switching state	LED, yellow
<b>Standard conformity</b>	
EMC in accordance with	IEC / EN 60947-5-2:2004; NE 21
Standards	DIN EN 60947-5-6 (NAMUR)
<b>Ambient conditions</b>	
Ambient temperature	-25 ... 100 °C (248 ... 373 K)
<b>Mechanical specifications</b>	
Connection type	0.5 m, PVC - flexible lead
Core cross-section	0.14 mm <sup>2</sup>
Housing material	PBT
Protection degree	IP67
<b>General information</b>	
Use in the hazardous area	see instruction manuals
Category	1G; 2G; 3G; 1D

Release date: 2008-10-06 10:53 Date of issue: 2008-10-08 10:6567\_ENG.xml

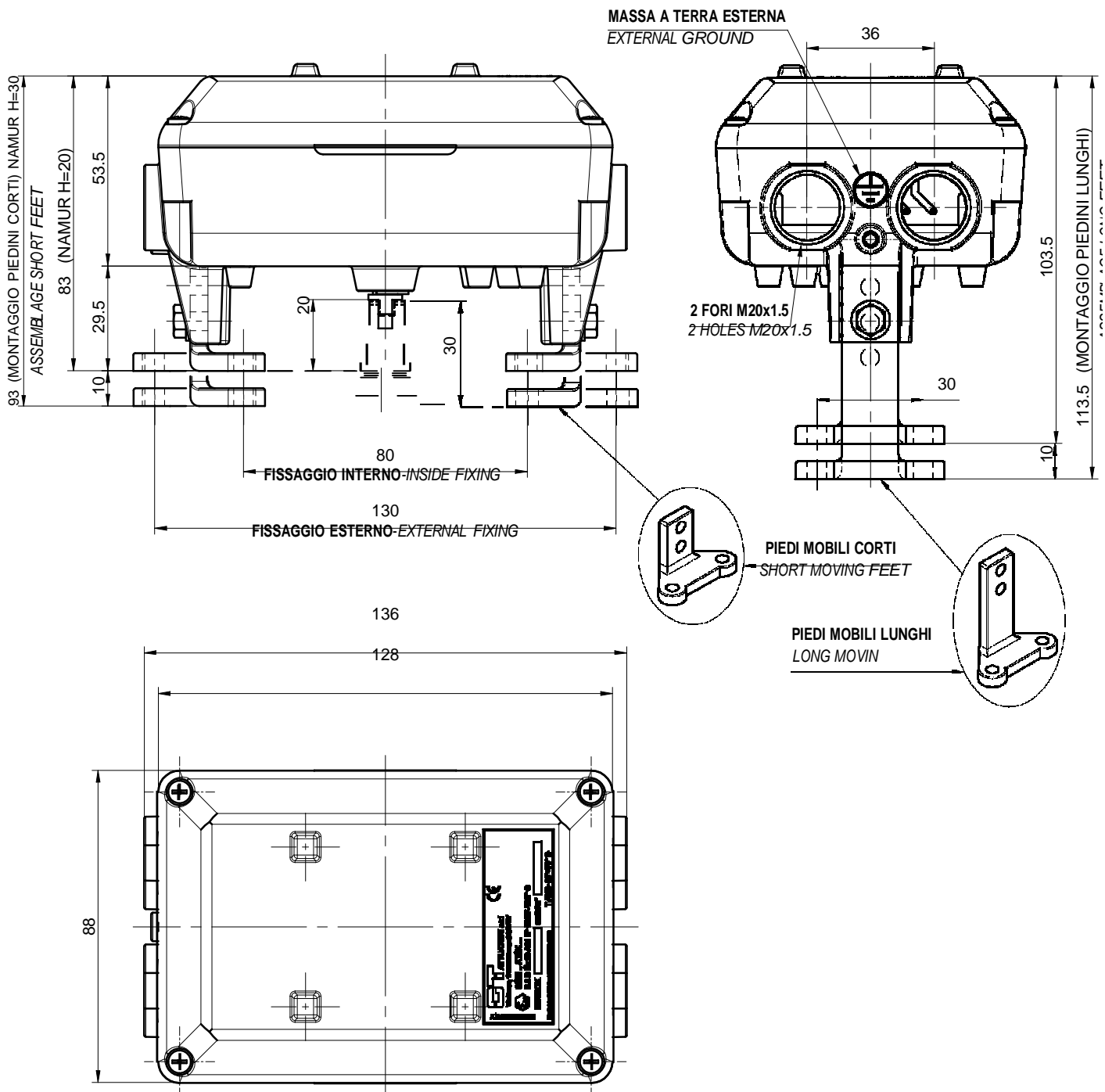
**BOX INDICATORE / SIGNAL BOX**

**" MINIBOX GT "**

VERSIONE COPERCHIO CIECO / VERSION BLIND COVER

PER MODELLI / FOR MODELS:

**GTMS-2-Ø12 - GTMM-2 - GTMM-4 - GTMS-2-SC 3.5**





www.icim.it

CERTIFICATO n. 0210/5  
CERTIFICATE No. \_\_\_\_\_

SI CERTIFICA CHE IL SISTEMA DI GESTIONE PER LA QUALITA' DI  
WE HEREBY CERTIFY THAT THE QUALITY MANAGEMENT SYSTEM OPERATED BY

### G.T. ATTUATORI S.r.l.

UNITA' OPERATIVE  
OPERATIVE UNITS

Viale Europa, 17 - 20090 Cusago (MI)  
Italia

E' CONFORME ALLA NORMA  
IS IN COMPLIANCE WITH THE STANDARD

### UNI EN ISO 9001:2000

PER LE SEGUENTI ATTIVITA'  
FOR THE FOLLOWING ACTIVITIES

EA: 18

Progettazione e produzione di attuatori pneumatici ed accessori.  
*Design and production of pneumatic actuators and accessories.*

Riferirsi al Manuale della Qualità per l'applicabilità dei requisiti della Norma ISO 9001:2000.  
Refer to Quality Manual for details of application to ISO 9001:2000 requirements.

Il presente certificato è soggetto al rispetto del regolamento per la certificazione dei sistemi di gestione per la qualità delle aziende.  
The use and the validity of this certificate shall satisfy the requirements of the rules for the certification of company quality management systems.

Data emissione  
First issue  
20/07/1994

Emissione corrente  
Current issue  
10/04/2009

Data di scadenza  
Expiring date  
09/04/2012

ICIM S.p.A. - PIAZZA A. DIAZ, 2 - 20123 MILANO

CISQ is a member of



*IQNet, the association of the world's first class certification bodies, is the largest provider of management System Certification in the world. IQNet is composed of more than 30 bodies and counts over 150 subsidiaries all over the globe.*

CISQ è la Federazione Italiana di Organismi di Certificazione dei sistemi di gestione aziendale

CISQ is the Italian Federation of management system Certification Bodies



ACCREDITAMENTO ORGANISMI DI CERTIFICAZIONE E IAF/EA

Membro degli Accordi di Mutuo Riconoscimento EA e IAF  
Signatory of EA and IAF Mutual Recognition Agreements

SGQ N° 004A  
SGA N° 005D  
PRD N° 004B  
SCR N° 006F



www.cisq.com



THE INTERNATIONAL CERTIFICATION NETWORK

# CERTIFICATE

IQNet and its partner  
CISQ/ICIM  
hereby certify that the organization

**G.T. ATTUATORI S.r.l.**  
**Viale Europa, 17 - I-20090 Cusago (MI)**

for the following field of activities  
**Design and production of pneumatic actuators and accessories.**

has implemented and maintains a  
**Quality Management System**  
which fulfills the requirements of the following standard

**ISO 9001:2000**

Issued on: **2009-04-10**

Validity date: **2012-04-09**

Registration Number: **IT-3737**



*René Wasmer*  
President of IQNET



*Gianrenzo Prati*  
President of CISQ

IQNet partners\*:

AENOR Spain AFAQ AFNOR France AIB-Vinçotte International Belgium ANCE Mexico APCER Portugal CISQ Italy CQC China  
CQM China CQS Czech Republic Cro Cert Croatia DQS Germany DS Denmark ELOT Greece FCAV Brazil  
FONDONORMA Venezuela HKQAA Hong Kong China ICONTEC Colombia IMNC Mexico Inspecta Certification Finland  
IRAM Argentina JQA Japan KFQ Korea MSZT Hungary Nemko AS Norway NSAI Ireland PCBC Poland QMI Canada  
Quality Austria Austria RR Russia SAI Global Australia SII Israel SIQ Slovenia SIRIM QAS International Malaysia  
SQS Switzerland SRAC Romania TEST St Petersburg Russia YUQS Serbia

IQNet is represented in the USA by: AFAQ AFNOR, AIB-Vinçotte International, CISQ, DQS, NSAI Inc., QMI and SAI Global

\*The list of IQNet partners is valid at the time of issue of this certificate. Updated information is available under [www.iqnet-certification.com](http://www.iqnet-certification.com)